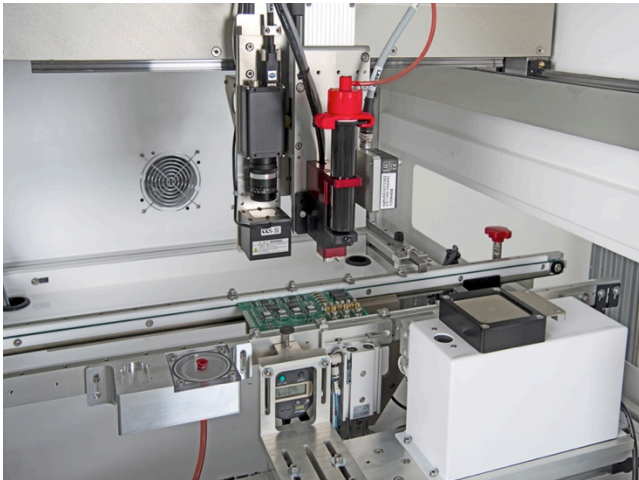




WHERE
PRECISION
DRIVES
PRODUCTION



Delta 6 SPECIFICATIONS

Gantry System Design

Closed loop brushless DC servo motors with optical encoders and ball screw slides on all axes

Work Area

1 Valve / Tool:
521 mm x 485 mm x 100 mm
(20.51" x 19.09" x 3.94")

XYZ Repeatability

±25 microns (±0.001")

Resolution

5 microns (0.0002")

Maximum Acceleration

1g

Footprint

847 mm x 1136.9 mm x 1606 mm
(33.35" x 44.76" x 63.23")

Programming Software

PathMaster® software with offline image import and programming capability

Delta 6 SELECTIVE COATING / DISPENSING SYSTEM

The Delta 6 is a new, reimagined flexible robotic conformal coating/dispensing system that is ideal for selective coating, potting, bead, and meter-mix dispensing applications. The Delta 6 features a robust overhead three-axis motion platform suitable for inline or batch operations.

While maintaining the preferred features of previous workcells, the Delta 6 has been designed with a slimmer footprint, improved structural and gantry rigidity for robustness, and easier access.

The Delta 6 has many options and integrated features including:

- ▲ Robotic system repeatability of 25 microns
- ▲ Patented servo-controlled optional four-axis motion featuring valve tilt and rotate
- ▲ Closed loop process control throughout gantry system
- ▲ Multiple dispensing applications or materials in one cell
- ▲ Onboard PC for unlimited program storage
- ▲ Exclusive PathMaster® programming environment

For more information, please contact PVA at info@pva.net or 1-518-371-2684.



One Mustang Drive
Cohoes NY 12047
tel 518 371 2684
fx 518 371 2688
www.pva.net

Delta 6

The Delta 6 is ideal for selective conformal coating and dispensing applications that require a high level of accuracy and repeatability in moderate to high volume manufacturing environments. It is a closed-loop robotic platform featuring optical encoder feedback on all axes.

Power: 120V, 220V, 50-60 Hz
Air Supply: 80 psi dry, unlubricated air

Board Handling:
 Conveyor Type: Flat belt or chain
 Minimum Conveyor Width: 50 mm (1.97")
 Maximum Conveyor Width: 500 mm (19.685")
 Board Clearance Topside: 80mm (3.15")
 Board Clearance Underside: 80 mm (3.15")
 Edge Clearance: 4.7 mm (0.185")
 Transport Height: 940 mm – 965 mm (37" – 38")
 Communication Protocol: SMEMA
 Conveyor Options: Lift and locate, through hole pin, under board support
 Conveyor Speed: Up to 24.4m/min (80 ft/min)
 Process Flow: Programmable right to left or left to right, bidirectional
 Weight Limit: 5 pounds (belt)
 15 pounds (chain)

XYZ Specifications
 Gantry System: Brushless DC servo motors
 Precision ball screw slides
 XYZ Repeatability: ±25 microns (±0.001")
 Maximum Speed (XYZ): 700 mm/sec (27.6"/sec)
 Maximum Acceleration: 1g
 Resolution: 5 microns (0.0002")
 Payload Capacity: 11.36 kg (25 lbs.)

Standard Features:
 PathMaster® Windows- based software
 FastPath™ offline image programming capability
 Onboard PC with flat screen monitor
 Remote teach pendant with trackball
 USB communication port
 Closed-loop low level exhaust notification (spray systems)

Fluid Applicators:
 Spray Valves: Examples of Valves in Listed Category
 FCS300-ES, FCS300-R/F, FC100-CF
 Dispense Valves: FC100-MC, FCM100, FC300
 Jetting Valve: JDJ
 Auger Valve: SV200, SVX
 Progressive Cavity Valve: VPX-450
 Material Feed Options: Syringe (1-55cc)
 Cartridge feed (6 – 20 oz.)
 Pressure vessel
 Drums, totes

Optional Features:
 Servo 4th Axis motion featuring valve tilt & rotate
 Closed-loop material flow monitoring
 Inline material metering
 Bar code program selection
 Low level fluid sensor
 Valve and / or fluid heating
 Programming camera
 Active vision with XY correction
 Substrate heating – contact or non-contact
 Dispense zone weigh scale
 Multi-zone conveyor
 Conveyor auto width adjust

Back Side of Machine 80-100 PSI
Dry Compressed Air Required

Power Drop Required - See Machine Spec for Voltage

