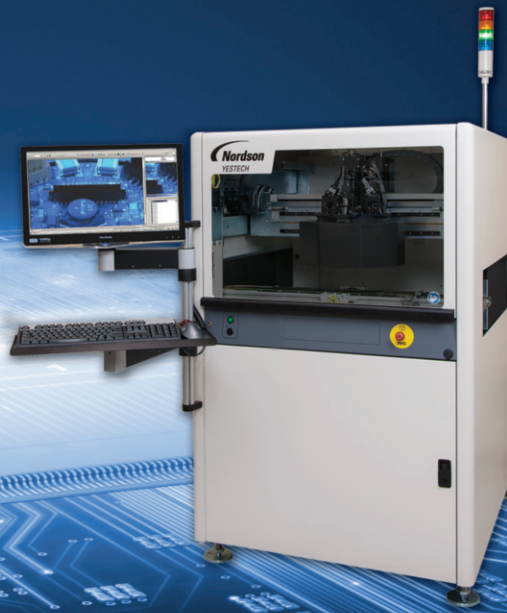


AOI & X-Ray solutions
you can count on.



FX-940UV AOI

Full size automated conformal coat inspection

Conformal coatings used by electronic manufacturers contain UV indicators for the purpose of inspection. Since coatings are transparent, units must be viewed under black light in order to verify coverage and non-coverage. The Nordson YESTECH FX-940UV makes inspection of conformal coatings simple and convenient by automating the inspection process for quality and consistency of coatings under UV lighting with the use of proprietary inspection algorithms.

With minimal programming, the inspection set-up is fast and intuitive typically requiring less than 30 minutes. A known good board is used to learn the coverage and non-coverage areas. The automated inspection typically takes only a few seconds with inspection results immediately displayed. These results can be stored and reviewed off-line at any time. The FX-940UV also reads all common barcodes for product traceability.

Features:

- Quick set-up with Auto Train
- 9 megapixel color imaging
- Proprietary lighting
- Optional side angle cameras

Automated Inspection for:

- Conformal coat coverage
- Micro Coatings
- Flux coverage
- Selected areas of non-coverage
- Delamination / cracks and bubbles
- SPC, barcode reading and archiving of inspection results
- Includes SMT and THT component inspection

FX-940UV AOI Full size automated conformal coat inspection

Specifications

Inspection Capabilities

Throughput:	Up to 30 sq. in./ sec.
Maximum Board Size:	18.5" x 19"
Clearance:	4" (100mm) top and bottom
Optional Upgrade:	4 side angle cameras
Defects Detected:	Coatings and dispensed material coverage, non-coverage, cracks and delamination

Software

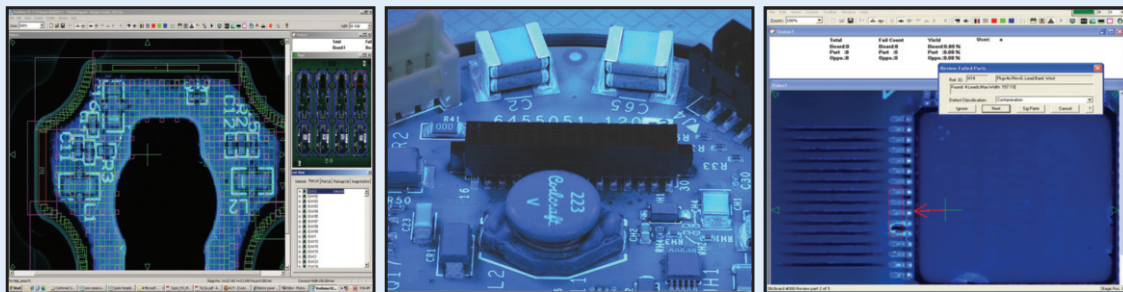
Algorithms:	Color, OCV, OCR, barcode recognition, both image and rule-based algorithms
Data Requirements:	None
CAD Translation Package:	Not required
Programming Skill Level:	Technician or operator
Operating System:	Windows 7
Off-line Software:	Optional - Rework, Review and Program Creation
SPC Software:	Real-time local and remote monitoring of first pass yield, defect trends, and machine utilization.

Hardware

Lighting:	Proprietary UV, Coax and White LED lighting
Imager:	9 megapixel color camera: 25 micron pixel size Resolution 4068 x 2160

Facilities

Power:	110-220 VAC, 50/60 Hz, 15 amps
Footprint:	39" x 52" x 60" (1000mm x 1329mm x 1531mm)
Weight:	950 lbs (430 kg)
Machine Installation:	< .5 hour



Automated inspection for conformal coat.

Side angle viewing cameras.

Defect image of conformal coat.

Nordson YESTECH

USA Headquarters:
2762 Loker Ave. West
Carlsbad, CA USA 92010
+1.760.918.8471 **Phone**
+1.760.918.8472 **Fax**

China:
#137 Guoshoujing Road
Zhangjiang Hi-Tech Park
Pudong,
Shanghai 201203, P.R.China
+86.21.3866.9166 **Phone**
+86.21.3866.9199 **Fax**

SE Asia:
2 Corporation Road
#03-11/12
Corporation Place 618494
Singapore
+65 6749 0538 **Phone**
+65 6552 7116 **Fax**

Europe:
62 Basepoint
1 Winnall Valley Road
Winchester
Hampshire, SO23 0LD, UK
+44 (0) 1962 832654 **Phone**
+44 (0) 1962 832501 **Fax**

Japan:
Tohshin Bldg. 2F
1-5-21 Katsushima Shinagawa
Tokyo, 140-0012
+81 3 5762 2801 **Phone**
+81 3 5762 2802 **Fax**



Nordson YESTECH
USA Headquarters
2762 Loker Ave. West
Carlsbad, CA USA 92010

+1.760.918.8471 **Phone**
+1.760.918.8472 **Fax**
sales@nordsonyestech.com
www.nordsonyestech.com

