

AOI & X-Ray solutions
you can count on.



M1m Series AOI

Automated inspection for microelectronics

Nordson YESTECH's advanced megapixel technology offers high-speed device inspection with exceptional defect coverage. With high resolution and telecentric optics, M1m inspects bond wires, die placement, SMT components and substrates, all within a footprint less than 1 sq. meter. The M1m can be put in-line with your wire bonders or off-line to support several bonders. A magazine loader/unloader is available for off-line operations.

Programming the M1m is fast and intuitive. With CAD data input, a complete recipe can be completed in less than 1 hour*. The offline programming option allows the engineer to create complete recipes at any remote location, without affecting production.

The M1m utilizes several image processing algorithms to perform a multitude of inspections historically performed manually by operators using eyepiece microscopes. Real-time color, normalized gray scale correlation, pattern matching and binary "blob" analysis are just a few of the tools used to automate the process.

Nordson YESTECH's M1m also provides you with SPC data, defect reports, offline defect classification, offline rework capability and even archived images of every device you inspect. In addition, Nordson YESTECH also provides free software upgrades for the life of the system.

Features:

- Megapixel color imaging
- High magnification top-down viewing camera
- Quick set-up
- High speed
- High defect coverage
- Low false failure rate

Automated Inspection for:

- Missing / damaged wires
- No stick / off pad
- Epoxy defects
- Die defects
- Bump / ball defects
- SMT defects
- Contamination



* Programming time varies depending on complexity of the assembly.

M1m Series AOI Automated inspection for microelectronics

Specifications

Model

M1m

Multi-function system with top-down viewing,
3 megapixel camera

Inspection Capabilities

Throughput:

75-125 sq. mm / sec.

Maximum Inspection area:

350mm x 250mm x 25mm XYZ (14 x 10 x 1 in.)

Device Types:

JEDEC, MCMs, Hybrids, FlipChip, BGA, microBGA,
MEMs, waffle packs

Defects Detected:

Wires: missing, damaged, no stick, off pad, club foot, lifted
Die: missing, wrong, polarity, chipped, cracked, contamination
Part: position, missing, wrong, polarity, skew, tombstone
Epoxy: contamination, insufficient, excessive, bridging
Solder: contamination, insufficient, excessive, bridging

Software

Algorithms:

Color, OCV, OCR, barcode recognition, both image and
rule-based algorithms

Data Requirements:

ASCII Text, X-Y position, part #, ref. #, polarity

CAD Translation Package:

Aegis, Unicam, Fabmaster, YESTECH CAD Utility

Operating System:

Windows XP Professional

Off-line Software:

Optional - Rework, Review and Program Creation

SPC Software:

Optional - Real-time local and remote

Hardware

Material Handling:

SMEMA, dual direction auto width conveyor,
pass / fail signals, board clamping

Conveyor Length:

876mm (34.5 in.)

Conveyor Height:

950mm + /- 35mm (37.5 + /- 1.3 in.)

Lighting:

Proprietary Fusion Lighting™ multiangle LED

Imager:

3 megapixel color camera (3 to 9 micron pixel size)

Resolution 2048 x 1536; 3 micron pixel size

Optics:

Proprietary high resolution, low distortion with
coaxial illumination

Magazine Loader / Unloader:

Optional

Laser Mark (top / bottom)

Optional

Ink Mark:

Optional

Facilities

Power:

100-240 VAC, 50/60 Hz, 10 amps

Air input:

60 to 90 PSI (0.4 to 0.6 Mpa), 2 CFM

Footprint:

876mm x 1010mm x 1400mm (34.5 x 40 x 55 in.)

Weight:

770 kg (1700 lbs)

Nordson YESTECH

USA Headquarters:

2762 Loker Ave. West
Carlsbad, CA USA 92010

+1.760.918.8471 **Phone**

+1.760.918.8472 **Fax**

Asia:

#137 Guoshoujing Road
Zhangjiang Hi-Tech Park

Pudong,

Shanghai 201203, P.R.China

+86.21.3866.9166 **Phone**

+86.21.3866.9199 **Fax**

Europe:

Bergerstraat 8

6226 BD Maastricht

The Netherlands

+31.352.4466 **Phone**

+31.352.7722 **Fax**

UK

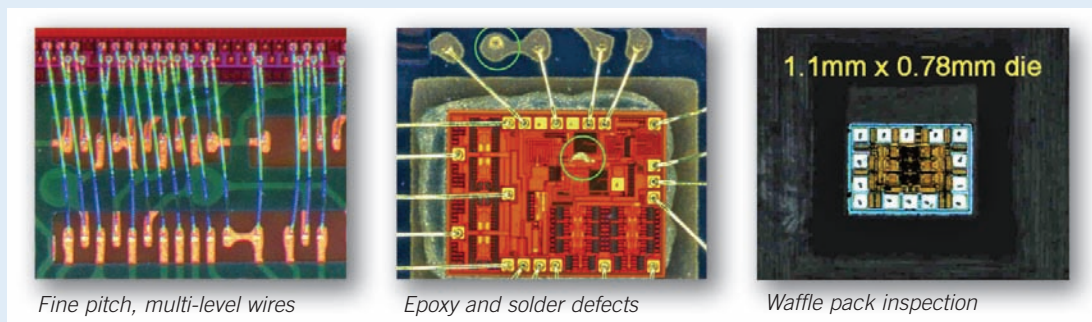
62 Basepoint

1 Winnall Valley Road

Hampshire, SO3 0LD UK

+44 (0) 1962 832654 **Phone**

+44 (0) 1962 832501 **Fax**



Nordson YESTECH
USA Headquarters
2762 Loker Ave. West
Carlsbad, CA USA 92010

+1.760.918.8471 **Phone**
+1.760.918.8472 **Fax**
www.nordsonyestech.com

