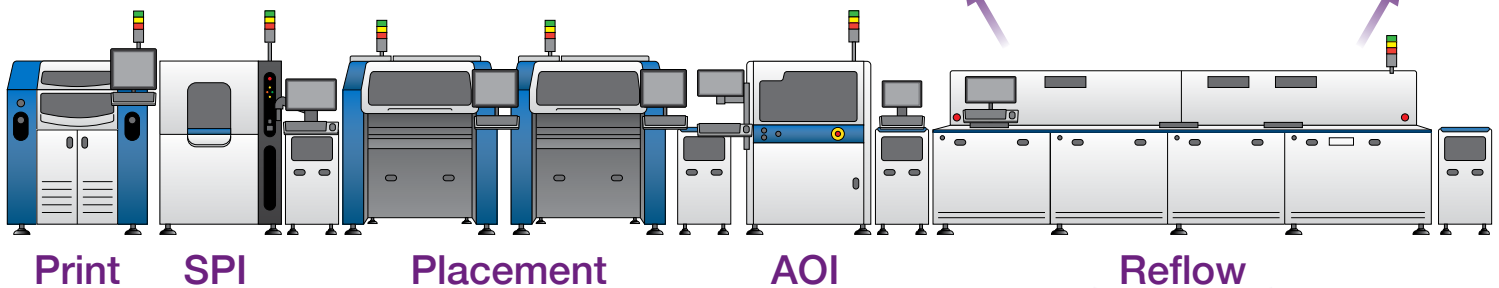
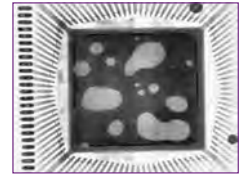
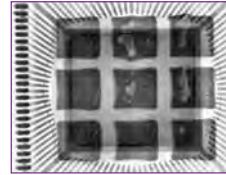


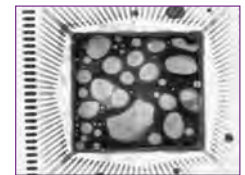
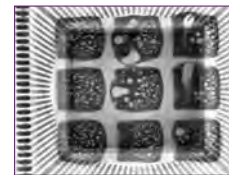
Heated Stage Reflow Simulator

X-ray Inspection Option

Conventional X-ray shows you before and after reflow:



See what is happening during reflow:



See Everything

Reflow individual components to see solder joint formation in real-time in regions only accessible to X-ray. The Heated Stage accessory for Quadra™ allows you to heat samples through pre-defined temperature profiles and see the results live using X-ray. Cover gases can also be applied to simulate inert reflow.

Solder and process characterization

See precisely where and when solder reflow begins and how it propagates. View void formation in real-time, see if voids are trapped or can escape. Qualify new solder pastes prior to use.

Temperature specific failure analysis

Many failure modes cannot be seen at room temperature, for example LED bondwire delamination. Use the heated stage to undertake X-ray inspection at specific temperatures.

Available When You Need It

Get results quickly when you need them. The heated stage is removable and portable with only a single cable connection, making it quick and easy to swap in.

At Home In Quadra

Reflow events can happen fast and in real-time so it is essential the X-ray can keep up.

At the heart of the Quadra image chain is the AspireFP™ flat panel detector, designed and manufactured by Nordson DAGE specifically to capture the best images from electronics components. 6.7 MP images at up to 30 frames per second ensure the X-ray video footage captures every event in high quality.

And with 20W output power available from the QuadraNT x-ray tube, bright, clear video is assured.

Specifications at a Glance

Max sample size (WxLxH)	200 x 200 x 25 mm (7.8 x 7.8 x 1")
Central heating region (WxLxH)	100 x 100 x 25 mm (3.9 x 3.9 x 1")
Heating power	Halogen and ceramic heating elements 2,250 W total output
Performance	Up to 350 °C at 4°C/s
Temperature measurement	Fixed thermocouples in base and ceiling of oven. Mobile thermocouple for board measurement
Field of view	Up to 15 mm
Oblique viewing	Up to 45°
Recording	Video recording included in Gensys™ X-ray inspection software
Safety	Smoke detector Oven door interlock Oxygen depletion sensor (for working with inert cover gas)
Installation	Separate power required, 200-230V AC, 10A 50/60 Hz



Heated stage accessory installed in Quadra™.

Includes:

- Heated stage unit
- Control software
- Temperature controller
- Safety sensors for oxygen depletion and smoke
- Cover gas input line and flow regulator
- 5 x reflow test PCBs



Watch the video

Real-time reflow with the heated stage

Americas + 1 760 930 3307
sales@nordsondage.com

Europe +44 1296 317800
globalsales@nordsondage.com

China +86 512 6665 2008
sales.ch@nordsondage.com

Germany +49 89 2000 338 270
sales.de@nordsondage.com

Japan +81 3 3599 5920
sales.jp@nordsondage.com

South East Asia +65 6552 7533
sales.sg@nordsondage.com

Taiwan +886 2 2902 1860
globalsales@nordsondage.com

United Kingdom +44 1296 317800
globalsales@nordsondage.com