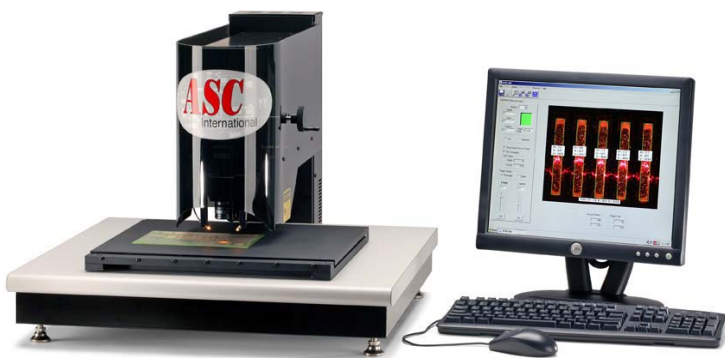




# LaserVision SP3D

The LaserVisionSP3D combines laser measurement accuracy with Automatic Data Collection (ADC) for real-time control of SMT stencil printing. With its Windows® XP interface, the SP3D is easy to learn and use, making it an exceptional value for the SMT manufacturer concerned with improving printing and production yields.



**Automated Solder Paste Inspection**  
(Shown with optional X-Y manual stage)

## System Features

- Windows® XP user interface
- Accurate & repeatable measurements regardless of substrate color and reflectivity
- Optional footswitch for hands-free operation
- Automatic calculation of height, area, width and volume measurements
- One-year, end-user warranty including technical support.

## System Includes

- Anti-static work surface
- 2.0+ GHz CPU and SVGA monitor
- Class II laser source
- Hardware/software reference manuals

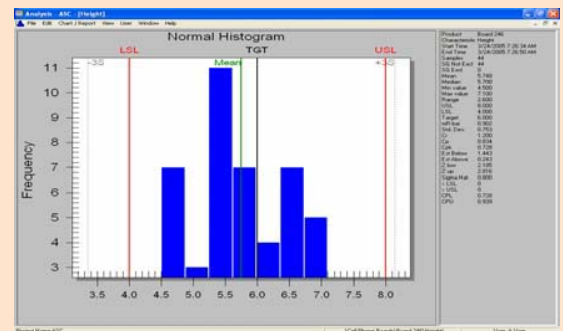
## Options

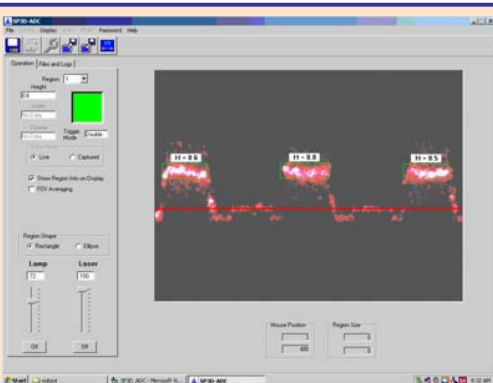
- Siemens® SPC Software (LAN Ready)
- NIST Traceable Standard
- Extended Warranty
- Manual X-Y Stage

## SPC Software (Optional)

The optional Siemens® Systems SPC software is a powerful tool that helps operators control the critical stencil printing process. Data collected by the SP3D is instantly analyzed by the Criterion Software. Calculations crucial to understanding printing performance are reported, including:

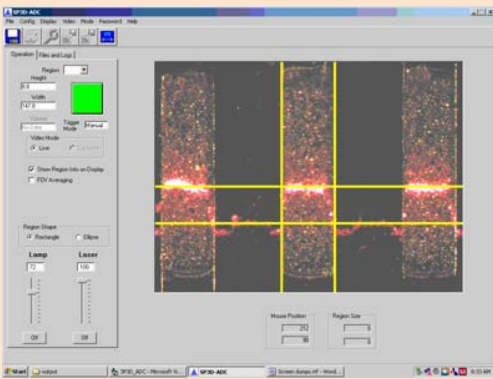
- X and Moving Range
- X-Bar and Sigma
- X-Bar and Range
- Histogram with normal and non-normal curves
- P Chart, np chart, c chart and u chart
- Pareto, weighted pareto for defects and corrective actions
- Variance and standard deviation
- Skewness, kurtosis and chi-squared for goodness of fit
- Min., max. and median values
- Cr, Cp, Cpk and lower Z values





### Automated Measurements

To obtain automated measurements on the SP3D, position the circuit board under the system's laser measurement sensor to the desired location. Simply depress the footswitch, or click the run button, to automatically calculate the solder paste height, width, area and volume measurements.



### Manual Measurements

To obtain manual measurements on the SP3D, position the circuit board under the system's laser measurement sensor to the selected location. Using the mouse, move and align the on-screen reticles for the desired measurement (height, width, area, volume, length and registration). Results are displayed on the monitor and can also be automatically logged to the optional SPC software for further analysis.

## System Specifications

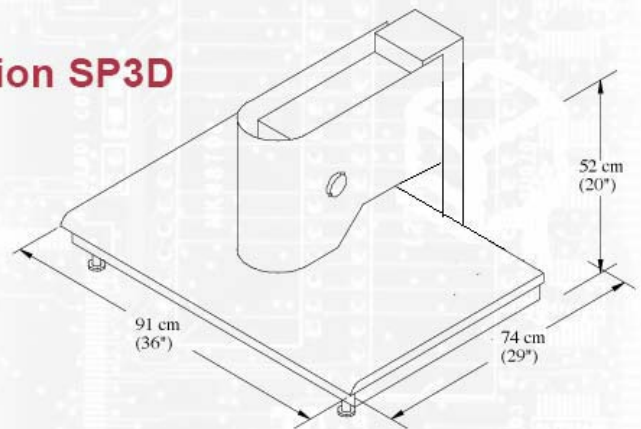
- **Maximum Object Thickness** 3.8 cm (1.5")
- **Standard work Surface (W\*L)** 91 cm x 61 cm (36" x 24")
- **Throat depth** (laser to rear support) 41 cm (16")
- **System Computer** 2.0+ GHz – 64+ MB RAM
- **Electrical Requirements** 100-240 VAC, 50-60 Hz, 2 Amps
- **Ambient Operating Temperature** +5° to +38° C (+40 to 100 F)
- **Ambient Operating Humidity** <90% non-condensing
- **System Weight\*** (crated) 80 Kg (175 lbs)
- **System Weight\*** (un-crated) 36 Kg (80 lbs)

\*not including system pc and monitor

## Sensor Specifications

- **Laser Type** 1 mW, 670 nm laser diode
- **Resolution** 2.54  $\mu$ m (0.15mil)
- **Integral Video Camera** CMOS Color Camera
- **Field of View** 2.3 mm x 3.0 mm  
92 mils x 120 mils

## LaserVision SP3D



For More Information:

### ASC International

1799 County Road 90, Suite 9  
Maple Plain, MN 55359 U.S.A.

- Tel: USA 763-479-6210
- Fax: USA 763-478-6206
- E-mail: [info@ascinternational.com](mailto:info@ascinternational.com)
- Web: [www.ascinternational.com](http://www.ascinternational.com)
- Toll Free: 1-888-478-2912 (USA Only)

### CAUTION

LASER RADIATION  
DO NOT STARE  
INTO BEAM  
1.0 MW max power  
670 nm wavelength

CLASS II LASER PRODUCT

### Safety Considerations

The SP3D system complies with all applicable laws for the manufacture of laser devices. This system is classified as a Class II laser device by the Center for Devices and Radiological Health (CDRH). This classification requires two safety precautions: Do not stare directly into the laser source and do not point the laser at anyone else's eye.



CE