

SYSTEM INTRODUCTION

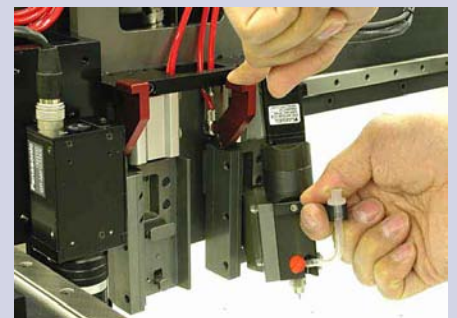
- | Compact Footprint
- | Unibody Frame
- | Functional Workarea
12" x 12" (305 mm X 305 mm)
- | 2 Valve/Tool Capability
- | Up To 36,000 Dots / Hour
- | Accuracy of ± 0.001 " (0.025 mm)
- | Linear Speed of 30"/sec (768 mm/sec)

The **GPD Global[®] MicroMax[®]** is a compact, high accuracy system designed for today's advanced applications. The frame is molded from "liquid rock" which gives the system a stable platform for accurate positioning and high-speed production.

Two valve capability lends the system to many different processes. Each tool or valve is mounted to the MicroMax gantry via GPD Global's exclusive Tool-less Taper-Lock[™] mounting hardware. An operator does not need any tools to remove or add a valve to the system. Additionally, GPD Global's Micro-Dot and LX Auger valves both incorporate a tool-less design making cleaning and changeover a snap.

The Micro-Dot valve is capable of dispensing a wide range of material in very accurate, small volumes; materials include solder pastes, conductive adhesives and underfills, to name a few.

GPD offers many innovative features that ensure a process is done with confidence. Some key features are: Automatic X, Y, Z calibration (no operator intervention required), needle cleaner, computer controlled syringe air pressure, ClearVu[™] Vision, Contour Mapping[™], FLOWare[®] operating software and multi valve capability.



Standard Features

- Automatic Vision
- Red/Blue Illuminator
- Needle Cleaner
- Auto X, Y, Z Calibration
- 2 Valve Capability
- Tool-less Taper-Lock™ Mounting Hardware
- Computer Controlled Syringe Pressure
- FLOWare® Operating Software
- Network Communications

Power

MicroMax® SA, MicroMax® IL

120 Volts or 230 Volts AC frequency 50-60 Hz
 Maximum 10 amps @ 120 Volts or 5 amps @ 230 Volts

GPD Global recommends use of dedicated, external circuit breaker/fusing. Alternately, use properly rated branch fusing.

Air

Pressure (clean & dry air) . . . 80 psi (552 kPa)
 Flow rate (minimum) 4 CFM @ 87 psi
 (113 l/min @ 600 kPa)
 Air fitting thread* 1/4" NPT
 *(customer supplies connection hardware)

Ventilation

Exhaust port* 4" (101.6 mm)
 *(customer supplies ducting to exhaust port)

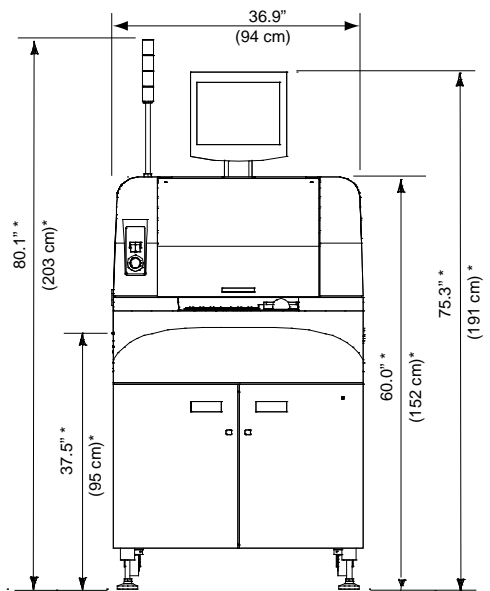
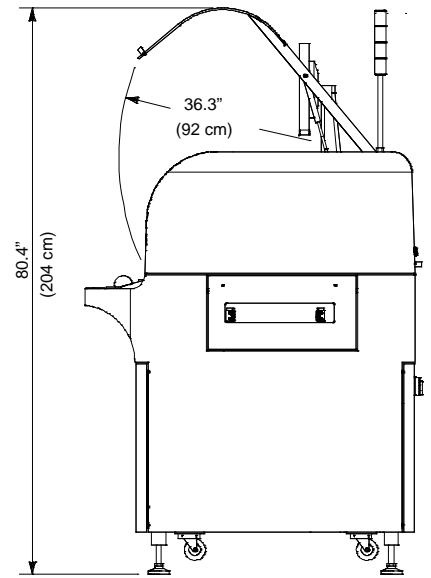
Crating Specifications

MACHINE - Crate 1 of 2

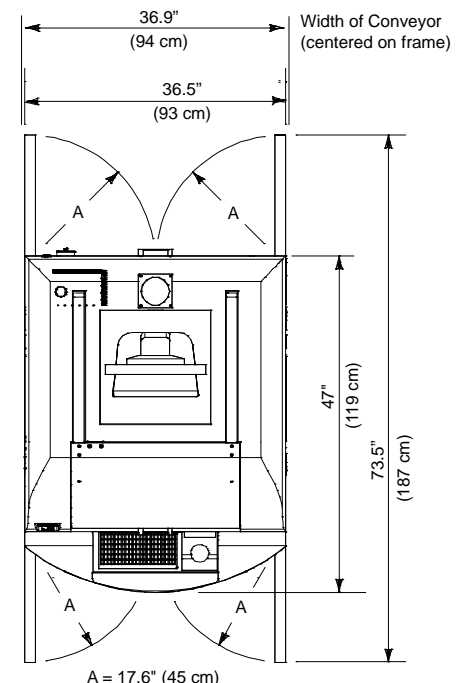
Weight, crated. 2250 lbs (1021 kg)
 Dimensions, crated. 51" W x 57" D x 72" H
 (130 cm W x 145 cm D x 183 cm H)

SYSTEM ACCESSORIES - Crate 2 of 2

Weight, crated. 50-100 lbs (23-45 kg)
 Dimensions, crated. 24" W x 24" D x 28" H
 (61 cm W x 61 cm D x 71 cm H)



* All vertical dimensions can be adjusted (together) to +2.75" and -1.75" (+70 mm & -45 mm)



Headquarters 2322 I-70 Frontage Road, Grand Junction, CO 81505
 Tel: (970) 245-0408 – Fax: (970) 245-9674 – request@gpd-global.com – www.gpd-global.com

Asia/Pacific 4F-5, 110 Chuon-San Road – Chuon-Ho – Taipei, Taiwan
 Tel: +886-2-3234-8650 – Fax: +886-2-3234-8669 – request@gpd-asia.com – www.gpd-asia.com