

## SYSTEM INTRODUCTION

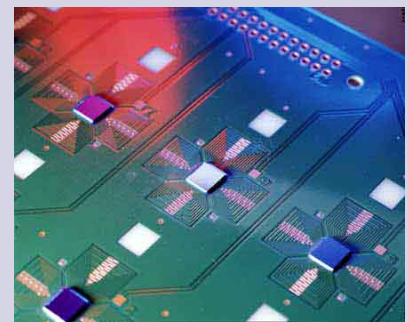
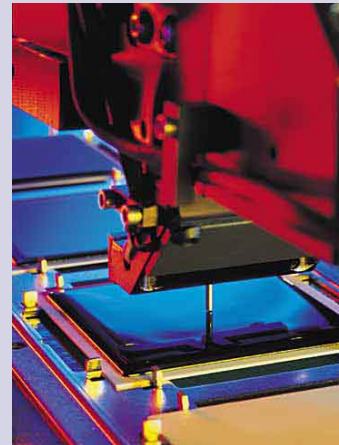
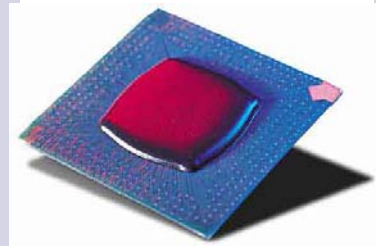
- | Compact Footprint
- | Unibody Frame
- | Functional Workarea  
12" x 12" (305 mm X 305 mm)
- | Heat Capability
- | 2 Valve/Tool Capability
- | Up To 36,000 Dots / Hour
- | Accuracy of  $\pm 0.001$ " (0.025 mm)
- | Linear Speed of 30"/sec (768 mm/sec)

The **GPD Global® MicroMax® II** is a compact, high accuracy dispense system that gives you the added flexibility of heat for your process. The frame is "liquid rock" which gives the system a thermally stable platform for accurate and repeatable positioning.

The MicroMax II platform from GPD Global incorporates all of the exceptional performance benefits of the MicroMax® with the additional capability of adding heat to your process. Heat is required in many processes to assist in material flow and to eliminate trapped air pockets. The MicroMax II is configurable with multiple heat zones allowing you to sculpt your process. Heat is available in the following areas: Pre-Post Heat, Work-Area, and at the Material and Needle. Maximum temperature for the substrate is 150° C while the material and needle may be heated to 70° C and 90° C respectively.



The MicroMax® Series incorporates many innovative features making the system easy to use and operator friendly. Some key features are: Automatic X, Y, Z calibration (no operator intervention required), needle cleaner, computer controlled syringe air pressure, ClearVu™ Vision, Contour Mapping™, FLOWare® operating software and multi valve capability.



# Standard Features

- Automatic Vision
- Red/Blue Illuminator
- Needle Cleaner
- Auto X, Y, Z Calibration
- 2 Valve Capability
- Tool-less Taper-Lock™ Mounting Hardware
- Heat and Vacuum Control Module
- Computer Controlled Syringe Pressure
- FLOWare® Operating Software
- Network Communications

# Power

## MicroMax® II SA, MicroMax® II IL

230 Volts AC frequency 50-60 Hz  
 5 amps @ 230 Volts

*GPD Global recommends use of dedicated, external circuit breaker/fusing. Alternately, use properly rated branch fusing.*

# Air

Pressure (clean & dry air) . . . 80 psi (552 kPa)  
 Flow rate (minimum) . . . . . 4 CFM @ 87 psi  
 (113 l/min @ 600 kPa)  
 Air fitting thread\* . . . . . 1/4" NPT  
 \*(customer supplies connection hardware)

# Ventilation

Exhaust port\* . . . . . 4" (101.6 mm)  
 \*(customer supplies ducting to exhaust port)

# Crating Specifications

## MACHINE - Crate 1 of 2

Weight, crated . . . . . 2450 lbs (1111 kg)  
 Dimensions, crated . . . . . 81" W \* x 57" D x 72" H  
 (206 cm W \* x 145 cm D x 183 cm H)

\*maximum width with pre/post heaters

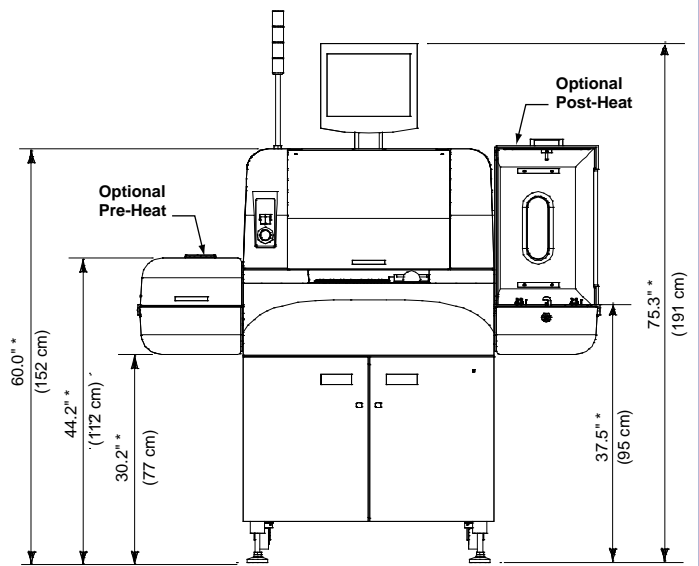
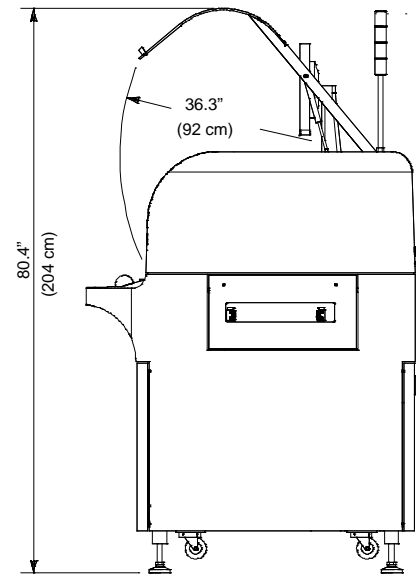
## SYSTEM ACCESSORIES - Crate 2 of 2

Weight, crated . . . . . 50-100 lbs (23-45 kg)  
 Dimensions, crated . . . . . 24" W x 24" D x 28" H  
 (61 cm W x 61 cm D x 71 cm H)



**Headquarters**  
 2322 I-70 Frontage Road, Grand Junction, CO 81505  
 Tel: (970) 245-0408 – Fax: (970) 245-9674 – request@gpd-global.com – www.gpd-global.com

**Asia/Pacific**  
 4F-5, 110 Chuon-San Road – Chuon-Ho – Taipei, Taiwan  
 Tel: +886-2-3234-8650 – Fax: +886-2-3234-8669 – request@gpd-asia.com – www.gpd-asia.com



\* All vertical dimensions can be adjusted (together) to +2.75" and -1.75" (+70 mm & -45 mm)

